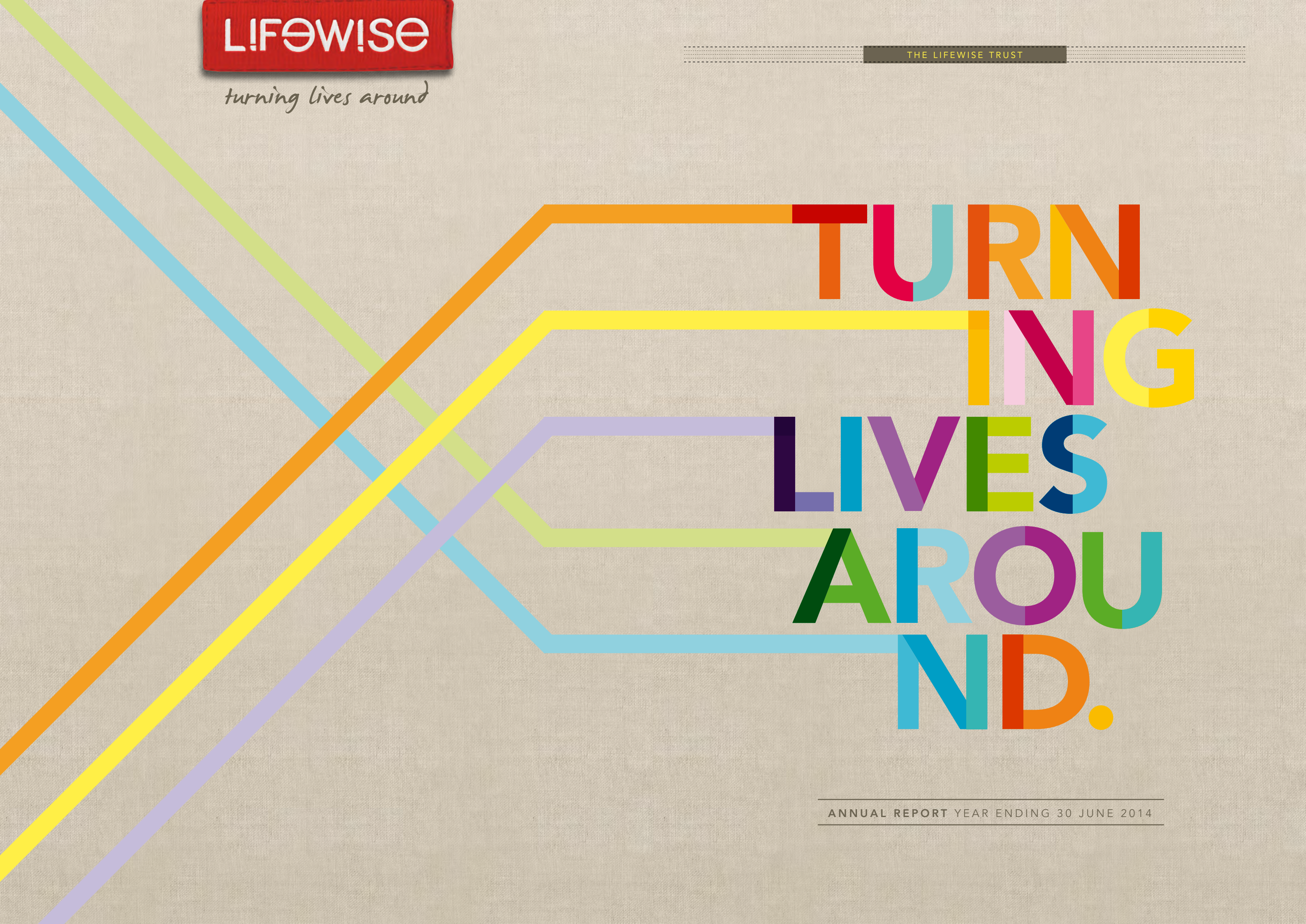


LIFEWISE

turning lives around

THE LIFEWISE TRUST



TURNING LIVES AROUND.

ANNUAL REPORT YEAR ENDING 30 JUNE 2014



FOR
ONE,
& ALL.

Our 2013/14 year was one of change as the Board farewelled John McCarthy, who served as Lifewise's General Manager for six years. We are so very grateful for John's passion and guidance of the organisation over those years. We are thrilled to welcome Moira Lawler to the role of General Manager and are confident her background in community and local development will be put to good use. We also welcome Sao Timaloa to the Board.

In October 2014 we celebrate the first anniversary of our high engagement partnership with ASB Community Trust. With the shared goal of achieving catalytic change to address homelessness, the partnership has been working successfully at all levels to assist further innovation. Similarly the relationship between Lifewise and Methodist parishes has flourished through collaborative projects this year too. We know that great success can come when we work with the parishes and this continues to fit nicely with our aim to connect with communities throughout the regions.

As is often the reality of our operating environment, Lifewise faced financial challenges in the 2013/14 year, including delivering services within the framework of government contracts. The organisation continues to explore other revenue streams as we strive to provide better value to those we assist and advocate on behalf of.



LEFT TO RIGHT: Marion Hines, Chair
Moira Lawler, General Manager
Reverend John Murrury, Executive Director

Looking forward we are well placed to identify the broader needs of communities, and be creative in the ways we respond. We cannot however do this alone. We believe collaboration to be key in the not-for-profit sector and that together, we will all achieve more. Lifewise therefore continue to look for partnerships with organisations with similar visions.

At the heart of everything we do though, are people, and nothing brings us greater delight than to share with you some of their successes. Lives turned around as a result of your support. We hope that you are deeply encouraged by what your support has been able to achieve this past year. These are your stories too. Thank you.

Marion Hines,
CHAIR

Reverend John Murrury,
EXECUTIVE DIRECTOR

Moira Lawler,
GENERAL MANAGER

Three Trusts, One Vision

While Lifewise is a determined charity standing up for people facing significant life challenges, it does not stand alone when it comes to achieving its' vision of creating 'connected, just and inclusive communities'.

In fact, Lifewise is one of three charitable trusts, all with this shared vision; the others being Methodist Mission Northern (MMN) and Airedale Property Trust (APT). With their different, yet complimentary purposes, the strength of the three Trusts' relationship comes through collaboration and working together. This year, they have worked on two key projects - opening the social housing project, Matanikolo in Mangere, and working alongside the Otara Tongan Methodist Church to operate Akoteu Tenga'i Musita (Mustard Seed), a Tongan language immersion early childhood education centre.

The development of Mustard Seed is a great example of combining skills and expertise to bring about positive outcomes for families and communities, and allowing the Trusts to provide ongoing support in their specialised areas of expertise. Lifewise gives management and operational support, APT project managed the build and continues to provide property support, and MMN has maintained the connection to the parish.

While led by the Airedale Property Trust, harnessing the expertise, power and influence of each Trust, the scope and scale of the work completed at Matanikolo has seen immediate results and stability for families and long-lasting community impact. Overlap

of resources and skillsets of the three Trusts has also allowed sustainable support to tenants, development of infrastructure, and smart ICT.

Lifewise acknowledges the crucial role Methodist Mission Northern has with anchoring its' work to the Methodist Church, as well as the role of APT as a 'for-good' business in developing and stewarding the assets, so that funding is available to drive social development.

A perfect example of the fact that together we all achieve more.



LEFT TO RIGHT:
Rev John Murray, Executive Director,
Bruce Stone, General Manager, Airedale Property Trust,
Moira Lawler, General Manager Lifewise.

Connections count. As social creatures we all thrive on connecting with others. Strong connections enhance our wellbeing. Lifewise is therefore delighted to share news of three developments that all create community connections.

Splice is a social movement, mobilising people in Auckland's city centre who care passionately about creating a fun and resilient community. Splice came about a year ago after the Rev. John MacDonald joined Methodist Mission Northern with a simple mandate to bring soul to the heart of this city. From pop-up street poetry, to open-air places full of people playing chess, to neighbourhood BBQs in local parks, Splice is already harnessing the energy and commitment of a group of mostly young people who reflect the diversity that Auckland is famed for. Splice is 'one cool' initiative that Lifewise is certainly very excited, and proud, to be part of.

Now in its fourth year, Merge, Lifewise's community café on Auckland's iconic K' Road, had a refit this year and a new logo to match. The homely atmosphere created has already seen a new crowd of locals and older people make it their lunchtime destination. The catch phrase 'do good food' really sums up the café; it's a place where everyone can eat well, feel good and do good, all at the same time. Plus with Merge now opening up as a venue for evening events such as plays, poetry and discussions, the café is fast becoming a humming neighbourhood spot. This

combined with the co-location of a team of support staff occupying the office upstairs, means Lifewise continues to carve out a path of innovation, moving away from social service provision to social development.

While Splice and Merge are local projects, Lifewise continues to promote the value of connections on a bigger scale through the annual Neighbours Day Aotearoa (NDA) campaign, which encourages neighbours to get to know each other. From its early beginnings as a local community development project of Takapuna Methodist church NDA has grown into a nationwide multiagency collaboration. Now the appointment of a dedicated NDA project manager, thanks to the support of The Tindall Foundation, is boosting the campaign, so we can promote the importance of neighbourliness throughout the year.

merge
DO GOOD FOOD

Splice
Courage Compassion Community

neighbours
day AOTEAROA

TURNING LIVES AROUND.

for Mac ...

... and other New Zealanders living with mental health and addiction.

When it comes to mental health and addictions, it's never just about the mind. That's why Lifewise has been encouraging those with mental health and addiction issues to look after their whole bodies through the HEHA programme.

One Rotorua man who has gained hugely from this is Mac, who came to Lifewise after being in "the pits of despair."

"I was majorly depressed and going through a really rough patch," says Mac. "I had to give up my job, couldn't cook or look after myself, and I ended up in hospital. I don't have much family, and it's hard to find friends who offer really practical help". Mac cites the alternative model that Lifewise uses, as the transition he needed, helping him get back on his feet and giving him back the independence and motivation he needed.

"It was a really nice environment, with lovely staff. The activities were what mostly helped me – I played tennis, went walking, did exercise, played board games, ate nice, healthy meals... The HEHA programme was really helpful," shares Mac.

"Before, everything was in the black. Now, I'm living life to the fullest, working part time in tourism. People who know me now are surprised that I've ever been depressed, but that's why I can say to them that it's not a life sentence – there is hope. Lifewise showed me that dealing with mental health is about more than medication – it's more holistic, and encouragement is a major part of it."

That's why Mac is happy to share his story.

**Names changed for confidentiality reasons.*

The HEHA programme takes a health and fitness approach to mental health and addictions, cultivating optimism and confidence and giving people the tools to maintain their health and wellbeing as they return to the community.

Lifewise provides emergency and transitional accommodation for those struggling with mental health and/or addictions. The service takes a Maori cultural framework, Te Ara Ora (Pathway to Wellbeing), and uses it in a service that works for people of all cultural backgrounds. This culturally based model recognises the whole person, which is, from our perspective, the most effective way to assist people and support them through their addictions or mental health issues.

TURNING LIVES AROUND.

for Sally ...

... and other New Zealand families who are struggling.

When the Miller* family were referred to Lifewise, they were working through grief and anxiety caused by the health issues of one parent, while also struggling with disagreements due to different parenting styles, and emotional and verbal aggression in the home. These issues were negatively impacting on their six year-old daughter Sally*, who reacted with challenging behaviour at home and at school, was constantly unsettled and unable to sleep.

From the outset both parents agreed that they wanted to work more collaboratively in their parenting, improve their relationship and eliminate aggressive interactions at home. Lifewise responded, focusing on the Millers' individual strengths, and employing a variety of strategies and resources such as parenting coaching, counselling both together and separately as well as parenting courses.

Sher, a team leader at Lifewise, also visited Sally at school for one-on-one counselling. "A benefit is that we're a mobile service," she says. "Sally's school offered her a safe and understanding space in which we could explore how her family environment had affected her." Art and play therapy helped Sally articulate how she felt, which helped her to understand her behaviour, the consequences of her actions, and how these affected both herself and others.

Both parents are working in partnership to maintain new routines, while supporting and encouraging Sally to continue improving her behaviour. The Millers all agree they are now enjoying spending time together as a family. It's still a work in progress, and Lifewise will continue to support the family, as they establish the groundwork for a healthy, happy future together.

**Names changed for confidentiality reasons.*

The family environment is often high-pressure and families in New Zealand are experiencing an increasing level of domestic violence, poverty and isolation. While these issues affect all involved, it is often children who suffer most. In such situations, a lack of support can result in the breakdown of families, whanau and communities, which is often a very traumatic experience.

Lifewise offers support to families who may not otherwise have access to it. The aim is to empower, challenge and reassure parents and help them build confidence in their decisions. Lifewise has made a commitment to making a lasting difference, believing that if something is worth doing, it's worth doing well.

TURNING LIVES AROUND.

for Mele ...

... other New Zealanders seeking career opportunities.

Mele Hola has worked in early childhood education since 2006 but when she became Centre Manager at the newly opened Akoteu Tenga'i Musita (Tongan immersion early childhood education) centre in July 2013, it was a huge opportunity for her. Recognising that an investment in the professional development of teachers and managers directly translates into better educational outcomes for children, Lifewise has walked alongside Mele supporting her to meet the challenges of her new role.

"The Lifewise team really helped me upskill," Mele says. "They've helped me develop my leadership skills and encouraged me to attend professional development seminars and workshops."

Something Mele found particularly valuable was Lifewise's commitment to results. "Professional development theory is great, but it's when it comes to practice Lifewise's support is really

beneficial," she states. "They've helped me to set goals for the centre and ensure these are met." At each monthly meeting, the Lifewise team observes for consistency and ensures theories discussed are put into practice.

The children at Mustard Seed are reaping the benefits. Along with their professional development services, Lifewise helped Mele secure funding for a "natural playground", which uses rocks, trees, sand and water in an interactive play area. Though it's still in development, the children love it.

And it's not just the trees in the new playground that are growing. With the help of Lifewise, centre managers like Mele are developing themselves to offer the best early childhood education possible, through which local children can grow and learn to the best of their ability, while maintaining their language and cultural knowledge.

The first five years of a child's life are critical. During this time children develop skills and abilities that will impact on their future health, wellbeing, social interactions and academic achievement. Access to quality early childhood education is therefore vitally important.

Commonly, children who miss out on early educational opportunities are those from low socio-economic groups. Favouring empowerment over charity Lifewise has made a commitment to tackle this issue, and is partnering with local churches and schools, to ensure that quality early childhood education, tailored to suit the local community, is available to all. It's not just about running ECE centres, but also involves a dedication to the professional development of teachers, offering assistance in teacher registration, and focusing on reviewing, reporting and compliance.

TURNING LIVES AROUND.

for Ana ...

... and other New Zealanders living with a disability.

Ana was just 50 years old when she had a massive stroke. She felt that her life "just stopped." Bed-bound and non-verbal, she required hospital level care. Despite this, her family decided to bring her home. Although fully dependent on her daughter for care, Individualised Funding and support from Lifewise means that Ana's family have the ability to care for her in the way that they want.

Individualised Funding, which empowers those who live with disability, giving them choice and freedom to decide what type of service and support they require, was daunting at first. Faced with employing staff, doing payroll and managing paperwork, when Lifewise came into the picture, "everything started to fall into place". Lifewise provided Ana's family with support and information on how to manage Ana's care including setting up the employment of the carer of their choice.

Now the family can focus on managing their hours efficiently around Ana's needs while Lifewise processes the payroll for their employee. This means that Ana can stay with her daughter and grandchildren- those who were very important in her life before her stroke.

Ana's daughter has the flexibility to continue her studies and values the fact that her mother is there to see her children grow up – Ana's youngest grandchild was only three months old when Ana had her stroke. Ana herself is happy that her family is able to keep her at home around her grandchildren. She also remains part of her local community, going to church services, malls and out for walks in her wheelchair.

**Names changed for confidentiality reasons.*

As New Zealand changes how it supports those who live with a disability to provide healthcare to the community in their homes, Lifewise is readying the workforce for home-based care.

Lifewise honours the fact that those who are wishing to live independently deserve to have the very best care, and as such, is committed to workforce development, ensuring staff are supported and moving towards industry qualifications. Providing care in a person's home is an intimate and sensitive task, and Lifewise seeks to coordinate carers who have similar cultural backgrounds and language to those they are supporting. Lifewise understands and educates the workforce of cultural health sensitivities and seeks to invest strongly in the workforce to bring quality of care to a high standard.

TURNING LIVES AROUND.

for Johnny ...

... and other New Zealanders living on the streets.

Johnny* had been released from prison and was in danger of heading straight back if he continued on his familiar path of addiction, rough sleeping and offending. Johnny was entrenched in, but disengaged from, the probation process and was breaching his conditions regularly. The judge who oversaw him in court referred him to the Court of New Beginnings.

Once in the Court of New Beginnings, Johnny began to engage with Louise, social worker and team leader at Lifewise. Johnny decided to make plans - looking at accommodation options and addressing his substance abuse issues. Through Lifewise, a plan was put in place and an application made to Housing New Zealand to secure long-term accommodation. While waiting for longer-term housing to become available, Lifewise helped Johnny stay off the street, accessing secure-term

emergency lodging at James Liston Hostel. This allowed him to participate in The Bridge, a detox and addiction support programme and later, thanks to Lifewise's partnership with Community Alcohol & Drug Services (CADS), he started attending the Te Atea Marino programme.

Today, Johnny is doing well, he has completed his residential detox at CADS and he is participating in stage two of The Bridge programme. Social worker, Louise, has high hopes for Johnny. "He's made massive steps with us. In the past, Johnny used to disappear for a few weeks, going underground when things got tough. Now, he is engaged, working hard, and if he can't attend an appointment, he's the first to call us and let us know."

**Names changed for confidentiality reasons.*

Working with the Department of Justice to establish a 'homeless court' called the Court of New Beginnings was just one of number of approaches that Lifewise has piloted and evaluated in recent years in an effort to influence and change the way New Zealand responds to the issue of street homelessness. The Court has demonstrated outstanding results and Johnny is a living example of the impact the Court can have on lives.

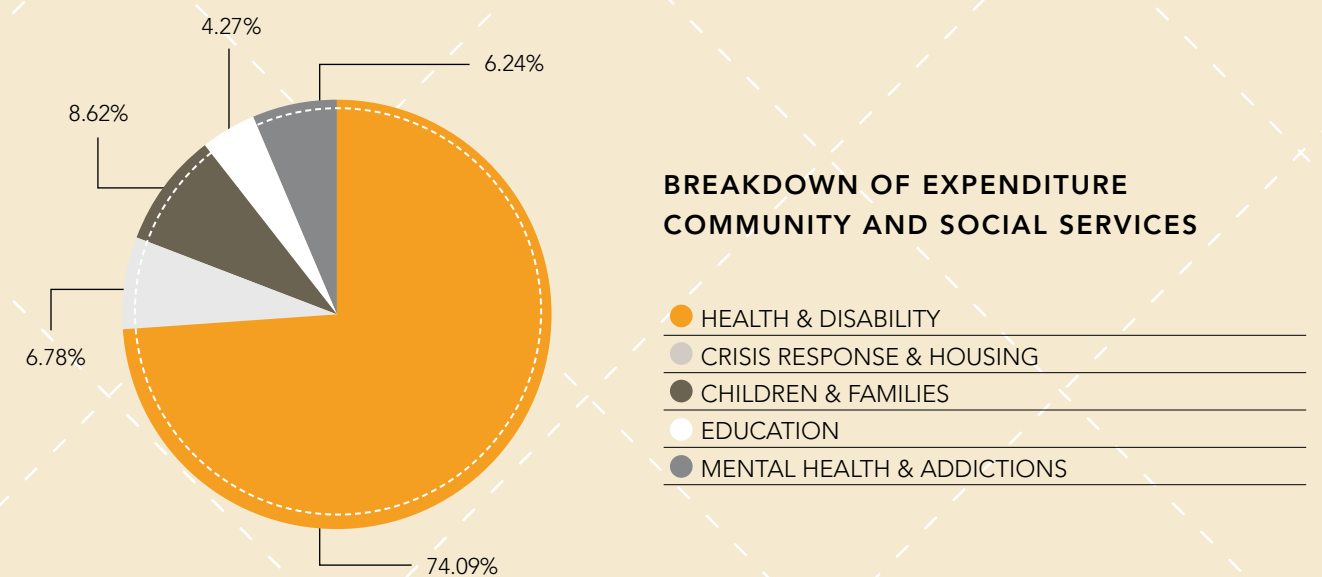
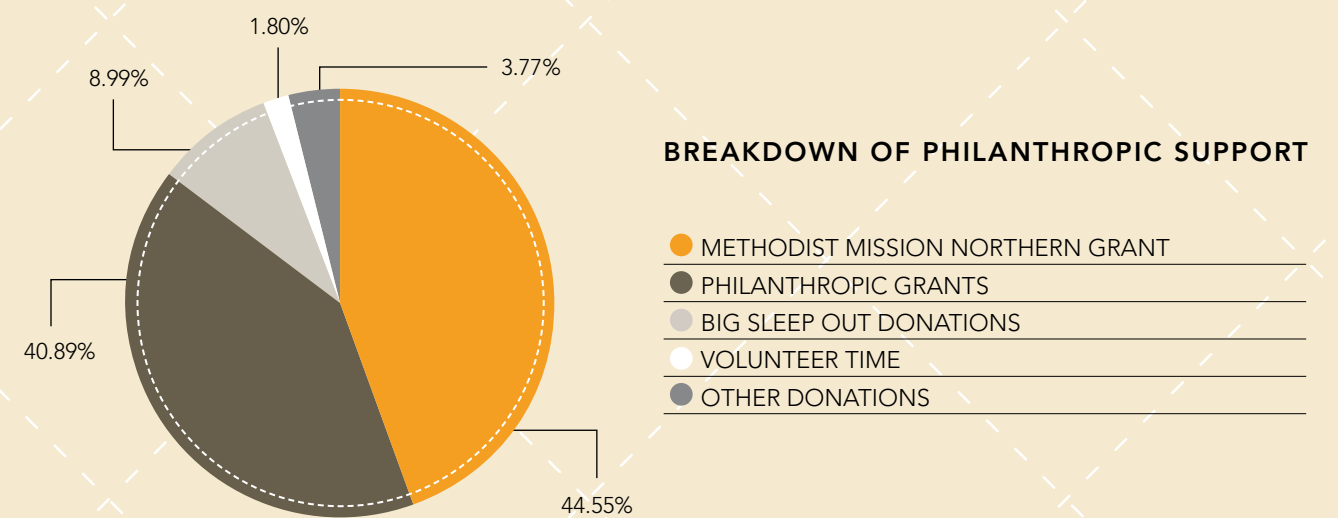
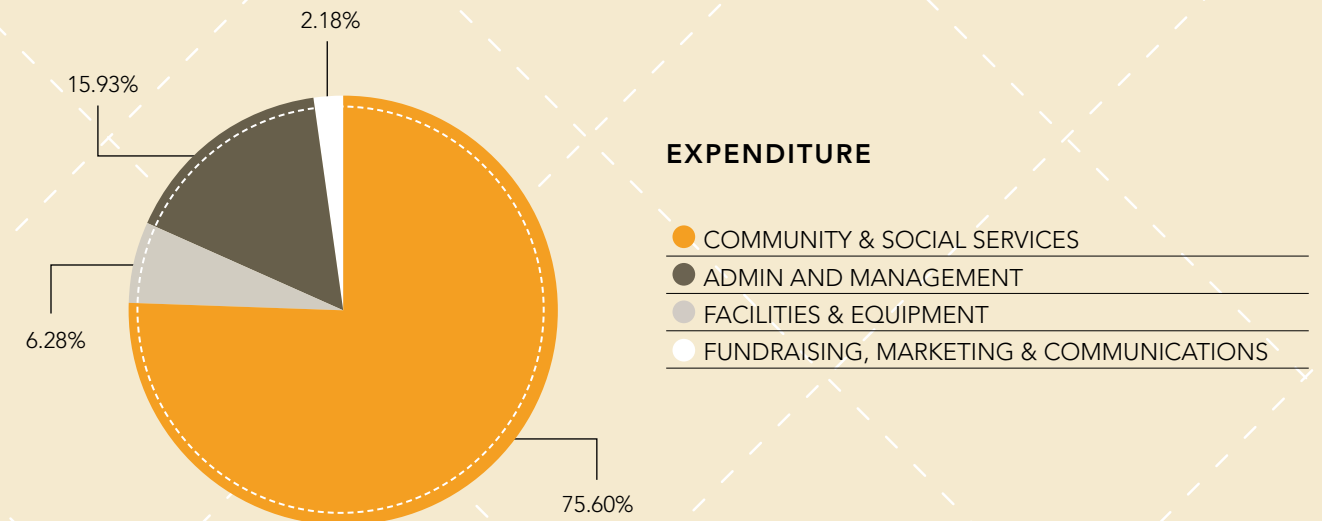
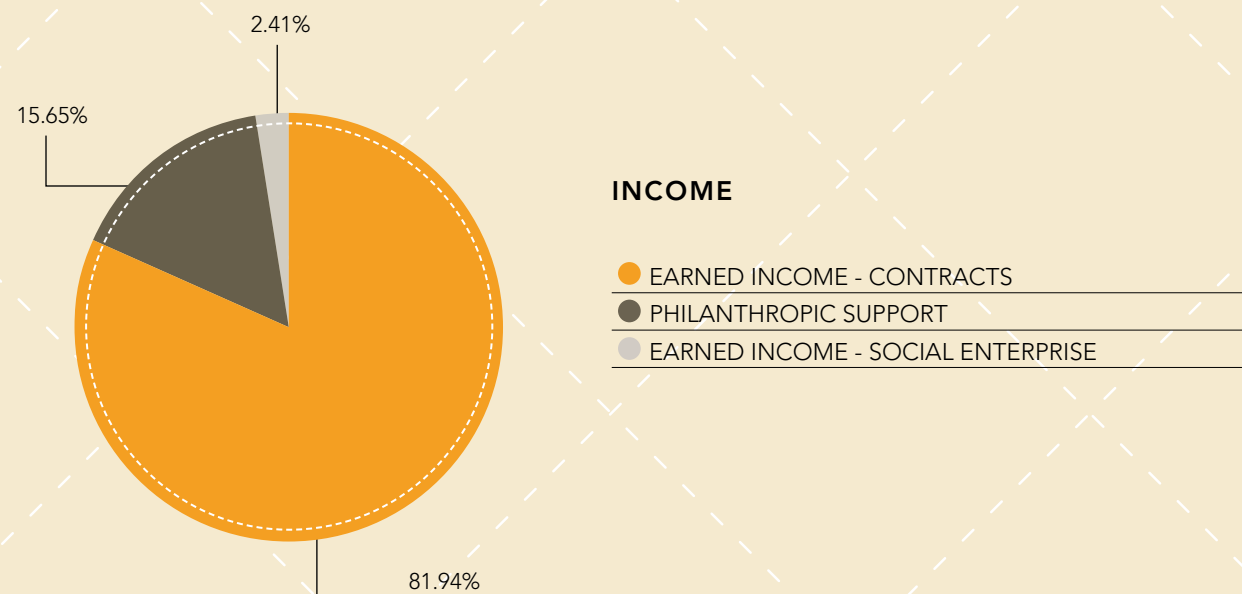
Now thanks to a new high engagement investment partnership with the ASB Community Trust, Lifewise will continue to develop its approach to ending homelessness, including moving from concentrating on intervention, to also develop strategies to prevent people becoming homeless, such as a programme to transition young people at high risk of homelessness from foster care to independence.

In order to realise our commitment to making New Zealand a fairer place for all people today and in the future Lifewise has to be financially sustainable.

We continue to explore new and innovative ways to diversify funding. Financial sustainability remains one of the biggest challenges facing not-for-profit organisations today.

This challenge requires us to carefully manage our costs, while at the same time investing in new approaches to solve social issues, investing in our staff as well as investing in up-to-date and innovative systems and processes that support and maintain our work supporting people to turn their lives around.

The foresight in creating a 'for good' business in Airedale Property Trust now allows Methodist Mission Northern to support Lifewise with an annual grant to cover much of our administration and management expenses, allowing Lifewise to target all donations received to frontline services, and thereby reassuring you, as the donor, that your thoughtful donation is making a difference in the lives of New Zealanders in need.



STATEMENT OF COMPREHENSIVE INCOME

	2014	2013
FOR THE YEAR ENDED 30 JUNE 2014	\$'000	\$'000
Total income	12,196	11,642
Total operating expenses	12,147	11,633
Surplus for the year	49	9
Share of surplus of jointly controlled entity	118	-
Net surplus for the year	167	9

STATEMENT OF CHANGES IN EQUITY

	2014	2013
FOR THE YEAR ENDED 30 JUNE 2014	\$'000	\$'000
Equity as at 1 July	668	679
Total comprehensive income for the year	167	9
Total equity at the end of the financial year	855	688

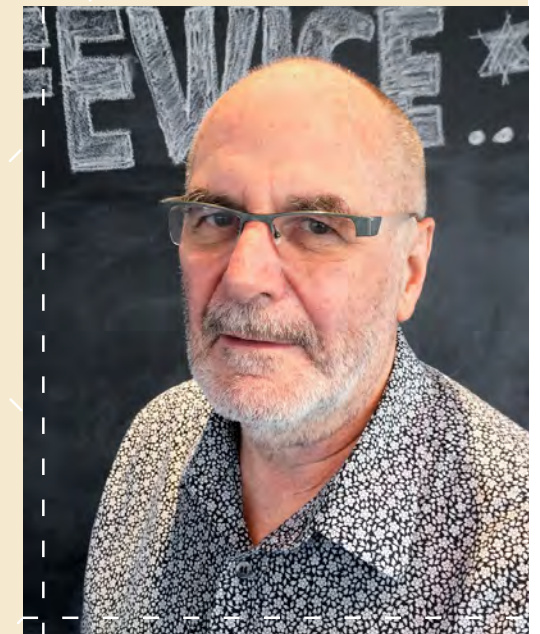
STATEMENT OF CASH FLOWS

	2014	2013
FOR THE YEAR ENDED 30 JUNE 2014	\$'000	\$'000
Cash flows from operating activities		
Net cash inflow/outflow from operating activities	618	(797)
Cash flows from investing activities		
Net cash inflow/(outflow) from investing activities	(618)	792
Net decrease in cash and cash equivalents	-	(5)
Add opening cash and cash equivalents brought forward	38	43
Ending cash and cash equivalents carried forward	38	38

STATEMENT OF FINANCIAL POSITION

	2014	2013
FOR THE YEAR ENDED 30 JUNE 2014	\$'000	\$'000
Funds and reserves		
Accumulated funds	855	688
Current liabilities		
Trade and other payables	3,507	1,657
Provisions	624	887
Total liabilities, funds and reserves	4,986	3,232
Non-current assets		
Property, plant and equipment	328	142
Intangible assets	-	-
Interest in joint ventures	221	-
Total non-current assets	549	142
Current assets		
Cash and cash equivalents	38	38
Trade and other receivables	3,343	2,051
Short term investment Methodist Trust Association	1,056	1,001
Total current assets	4,437	3,090
Total assets	4,986	3,232

This summary financial report has been prepared from the full financial statement of The Lifewise Trust for the year ended 30 June 2014 which were approved by the Board on 24 September 2014. The summary financial report cannot be expected to provide as complete an understanding as provided by the full financial statements of the financial performance, financial position and cash flows. The full financial report of The Lifewise Trust has been audited and received an unqualified audit opinion. This summary financial report has not been examined by the Auditors. A copy of the full Financial Report may be accessed through the Charities Services website, www.charities.govt.nz.



Allan Clarke
Financial Controller

A BIG THANK YOU

At the heart of Lifewise is a passion for social change, a vision which, I know, is shared by you; our donors, our funders and our volunteers. Together we are change agents; from changes on issues, to changes for individuals. Lives have been turned around thanks to your support.

Our new high-engagement relationship with the ASB Community Trust focuses on social change, extending our commitment to ending homelessness. Thanks to this five year partnership, which began in late 2013, we can further redirect our effort from crisis intervention to prevention, piloting new approaches to tackling the causes of homelessness and sharing what we learn with other agencies.

This year marked the fifth anniversary of the launch of the Lifewise Big Sleepout and the 2014 event and fundraising campaign was bigger than ever before. I particularly want to acknowledge Sarah Trotman, Nick Jones, David MacGregor and Michael Stowers who have taken part in all five events held to date; AUT University, our outstanding partner & host; all our individual fundraisers including our top five of Bruce Stone, Mike Marr, Vaughn Davis, Graham Miller and Craig Cotton; our top corporate team from IAG, closely followed by Vodafone; and finally Givealittle & Spark Foundation, thanks to their zero-fee online fundraising technology, and the huge fundraising drive of everyone involved, an amazing \$177,700 was collectively raised this year. Thank you everyone, Lifewise is deeply grateful for your commitment.

The groundswell of community support for our work drives the Lifewise team on. Lifewise has some incredible friends. Sadly we cannot list all of you here however I'd like to thank all those who continue to make the work highlighted in this report possible. You truly are turning lives around with your support. Thank you.



Dr Lesley Mynett-Johnson
DIRECTOR OF FUNDRAISING,
MARKETING & COMMUNICATIONS



BIG SLEEPOUT 2014 PARTICIPANTS

8

TEAMS

109

INDIVIDUALS



turning lives around



0800 LIFEWISE

WWW.LIFEWISE.ORG.NZ
